



National
Benevolent
Charity

Improving lives since 1812

Tewkesbury Borough Council
Funding Fair
29th April 2026



Our purpose: Helping people in a time of need, offering grants to organisations working to relieve poverty, and grants to people who are living in poverty or financial hardship.

Our values:

- Compassionate
- Collaborative
- Innovative



Strategy 2026-2029

- Improving Lives Fund for organisations
- Hardship Grants for individuals

We will address the needs of organisations and people living in Bristol, Gloucestershire, and Wiltshire & Swindon.

Improving Lives Fund: Our funding aim



We aim to make grants to a wide range of organisations working to alleviate poverty and improve lives.

Defining poverty

“Poverty means not being able to heat your home, pay your rent, or buy the essentials for your children.

It means waking up every day facing insecurity, uncertainty, and impossible decisions about money.

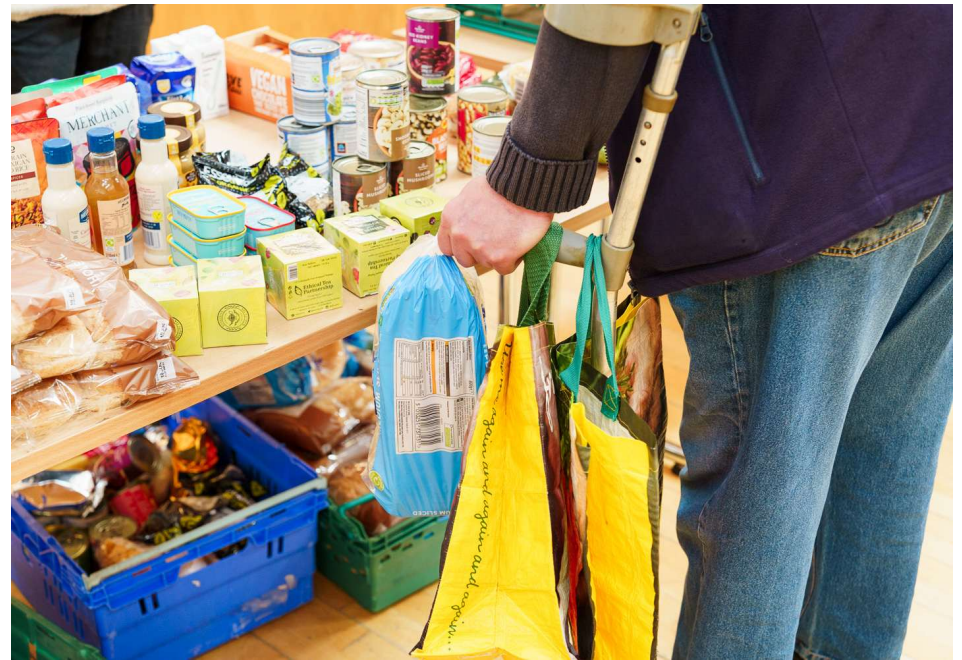
It means facing marginalisation – and even discrimination – because of your financial circumstances.”

[A definition of poverty | Joseph Rowntree Foundation \(jrf.org.uk\)](https://jrf.org.uk/what-is-poverty/)
[What is poverty? | Joseph Rowntree Foundation \(jrf.org.uk\)](https://jrf.org.uk/what-is-poverty/)



How do we tackle poverty?

- Essentials to those in destitution
- Education/ employment/ training
- Strengthening families and/ or communities
- Financial resilience



Improving Lives Fund 2026

- Single grant, unrestricted, £7,500
- Applications submitted online: www.natben.org.uk
- Two-stage application process:
 - 1) Stage 1 application form
 - 2) Those that progress to stage 2 are invited to a virtual meeting
- Closing date 24th July 2026 (outcome end of October 2026)

How do we make decisions?

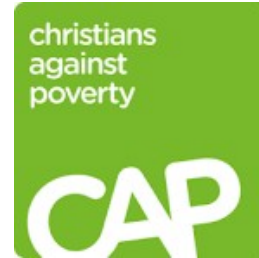
- Applications are assessed against a framework to ensure consistency in the evaluation process and alignment with our charitable objects.
- Organisations that go through to stage 2 are only those that will have a good chance of success.
- A conversation is at the heart of the process.
- All stage 2 applications are presented to our Grants Panel.



Eligibility and assessment criteria

- Eligibility: geography, poverty, technical, legal
- Two-stage assessment process:
 - 1) Stage 1 – organisational capacity (application form), focussing on purpose, finance, people.
 - 2) Stage 2 – alignment and impact (applicant meeting), focussing on poverty, lived experience and collaboration.

Recent Gloucestershire grant awards



Financial Hardship Grants

If you are a frontline support worker and have a client who

- is experiencing hardship
- is over 18 years old
- lives in Bristol, Gloucestershire, Wiltshire or Swindon
- has been in the UK for over 12 months
- has UK citizenship or been granted Indefinite Leave to Remain

You may be able to help them to apply for a Hardship Grant.

Our grants are designed to:

- Provide immediate financial relief
- Support stability and wellbeing
- Help prevent situations from becoming more serious



What can be applied for?

Subject to supply of further information, we can fund White Goods, Essential Household Goods, Food & Clothing, Priority Debts, Bankruptcy fees, Training and Work Tools and Floor Coverings.

In exceptional circumstances we may also fund disability aids, minor home repairs and rent arrears (private landlords only).

How much do we award?

Our grant awards range from £150.00 to £750.00 and are normally in the form of e - vouchers or payments direct to the supplier.



How to apply on a client's behalf

Support workers can help clients to apply by assisting them to complete an applicant profile online, helping them to securely link to their bank accounts, to upload any other relevant supporting evidence and provide them with a supporting statement confirming their circumstances. We will make an initial response to an application within fifteen working days. We cannot provide emergency funding.



Thank you!
Any questions?

Contacts

For organisational grants: vicky.oram@natben.org.uk

For individual grants: office@natben.org.uk

For more information: www.natben.org.uk